



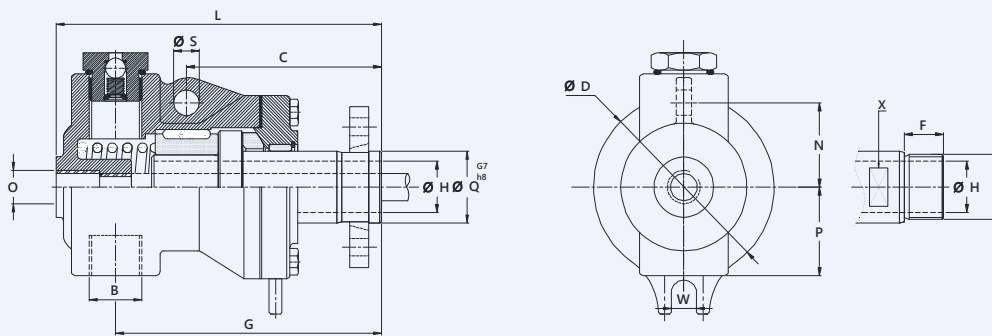
### Special Design Features

- Self-supported rotary union
- Heavy duty ductile iron housing up to 2½" size
- Heat treated carbon steel rotor
- Rotation of housing is prevented by fork on housing cover
- Highly wear resistant imported Carbon Graphite bush bearings
- Bush bearings are especially suitable for thermal oil in conditions of high pressure, temperature at moderate speed
- Duo flow design
- Stationary siphon connections with Vacuum Valves
- Available in both US and metric standards
- Easy installation & repairable
- Custom models are available

### Technical Data

- Max. Water Pressure 0.8 to 30 bar
- Max. Saturated Steam Pressure 0.8 to 30 bar
- Max. Hot Oil Pressure 0.8 to 10 bar
- Max. Temperature - 10°C to 320°C
- Max. Rotor Speed for 450 rpm
- Max. Flow of Media 24 L/min

## Duo-flow rotary union for non-rotating siphon pipe, with vacuum breaker



Size	Model No.	'B' Port Size	'R' Rotor Thread	'O' Outlet	Ø D	S	F	G	Ø H	L	N	P	C	Ø Q G7 / h8	X	W
DN 25 1"	8300-225-31R	3/4"	G 1" BSP-RH	G 3/8" BSP	98	14	29	143	25	173	55	50	105	---	30	14
	8303-225-31L	3/4"	G 1" BSP-LH	G 3/8" BSP	98	14	29	143	25	173	55	50	105	---	30	14
	8303-225-300	3/4"	---	G 3/8" BSP	98	14	29	143	25	173	55	50	105	35	---	14
DN 32 1-1/4"	8303-232-31R	1"	G 1-1/4" BSP-RH	G 1/2" BSP	115	16	34	168	32	201	64	56	119	---	41	16
	8303-232-31L	1"	G 1-1/4" BSP-RH	G 1/2" BSP	115	16	34	168	32	201	64	56	119	---	41	16
	8303-232-300	1"	---	G 1/2" BSP	115	16	34	168	32	201	64	56	119	45	---	16
DN 40 1-1/2"	8303-240-31R	1-1/4"	G 1-1/2" BSP-RH	G 3/4" BSP	125	16	37	184	38	224	67	67	125	---	46	16
	8303-240-31L	1-1/4"	G 1-1/2" BSP-LH	G 3/4" BSP	125	16	37	184	38	224	67	67	125	---	46	16
	8303-240-300	1-1/4"	---	G 3/4" BSP	125	16	37	184	38	224	67	67	125	50	---	16

\* Rotor Connections: R – RH Thread, L – LH Thread, 0 – Flange Connection, Other threads connections are available upon request.

Subject to technical & dimensional changes without prior notice.

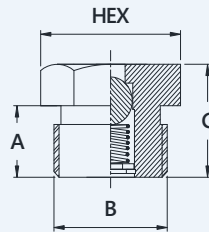


## Special Design Features

- Brass material
- Available in 1/2" & 1" size
- Provide protection against damages of steam heated rolls due to occurs low pressure
- Available also separately

## Technical Data

- Differential Pressure 0.3 bar
- Max. Temperature 160° C ( 320° F )



'B' Port Size	A	C	X
1/2" BSP	22	30	30
1" BSP	19	30	41

Subject to technical & dimensional changes without prior notice.