

8200 Series Duo-flow Rotary Unions for Steam & Hot Oil Applications



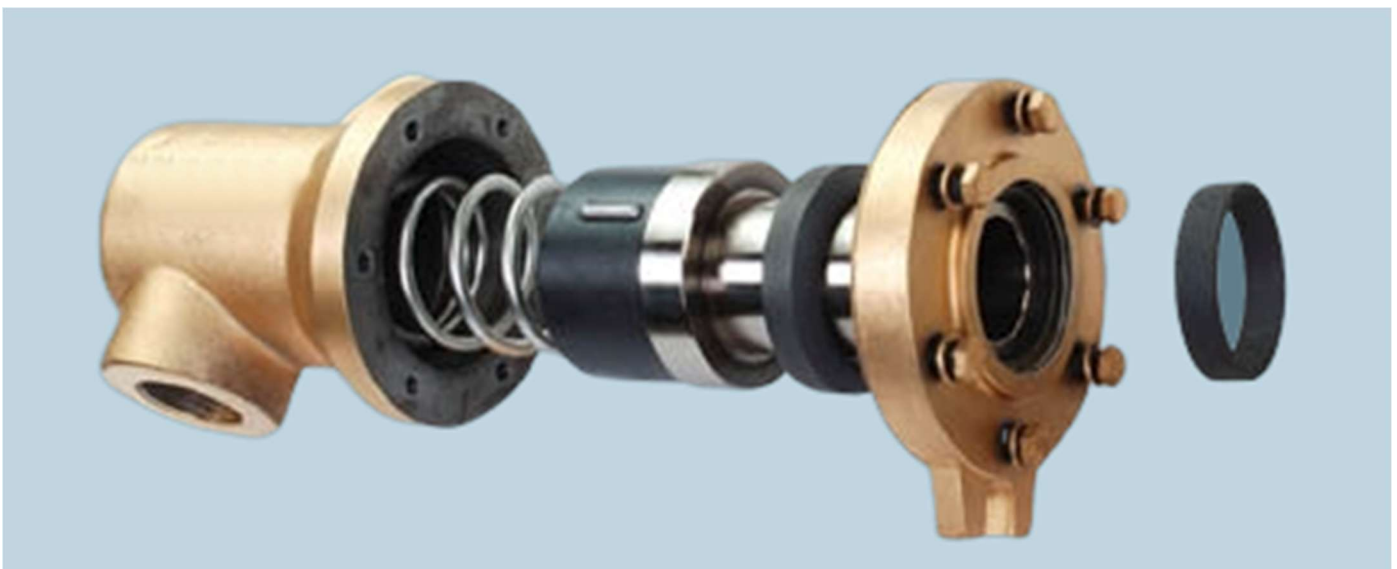
Special Design Features

- Self-supported rotary union
- Heavy duty ductile iron housing up to 2½" size
- Heat treated carbon steel rotor
- Rotation of housing is prevented by fork on housing cover
- Highly wear resistant imported Carbon Graphite bush bearings
- Bush bearings are especially suitable for thermal oil in conditions of high pressure, temperature at moderate speed
- Duo flow design
- Available in fixed inner siphon & rotating inner siphon design
- Available in both US and metric standards
- Easy installation & repairable
- Custom models are available

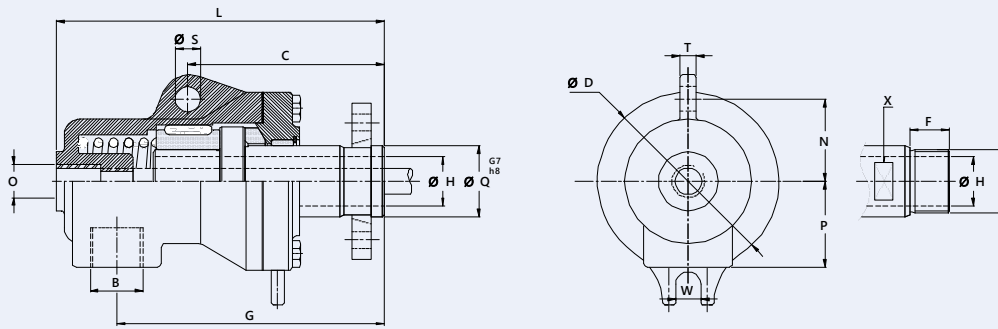
Technical Data

- | | |
|---------------------------------|-----------------|
| • Max. Water Pressure | 0.8 to 30 bar |
| • Max. Saturated Steam Pressure | 0.8 to 30 bar |
| • Max. Hot Oil Pressure | 0.8 to 10 bar |
| • Max. Temperature | - 10°C to 320°C |
| • Max. Rotor Speed for | 450 rpm |
| • Max. Flow of Media | 24 L / min |

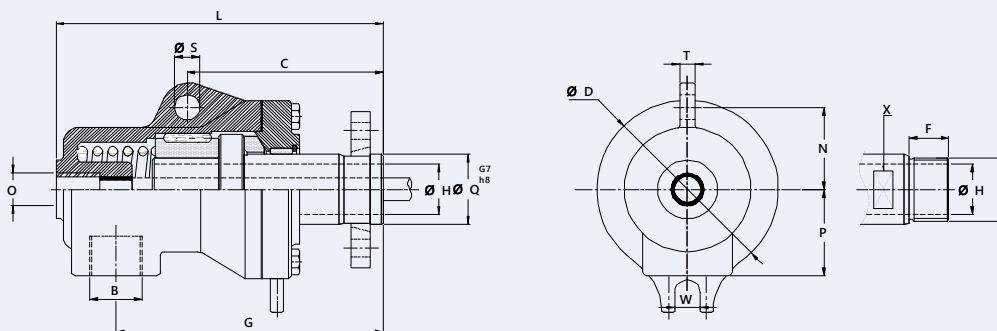
Construction of 8000 Series Rotary Unions



Duo-flow rotary union for non-rotating siphon pipe



Duo-flow rotary union for rotating siphon pipe



Size	Model No.		'B' Port Size	'R' Rotor Thread	'O' Outlet	Ø D	S	F	G	Ø H	L	N	P	C	Ø Q G7 / h8	X	W
	Stationary Siphon	Rotating Siphon															
DN 25 1"	8201-225-31R	8202-225-31R	3/4"	G 1" BSP-RH	G 3/8" BSP	98	14	29	143	25	173	55	50	105	---	30	14
	8201-225-31L	8202-225-31L	3/4"	G 1" BSP-LH	G 3/8" BSP	98	14	29	143	25	173	55	50	105	---	30	14
	8201-225-300	8202-225-300	3/4"	---	G 3/8" BSP	98	14	29	143	25	173	55	50	105	35	---	14
DN 32 1-1/4"	8201-232-31R	8202-232-31R	1"	G 1-1/4" BSP-RH	G 1/2" BSP	115	16	34	168	32	201	64	56	119	---	41	16
	8201-232-31L	8202-232-31L	1"	G 1-1/4" BSP-RH	G 1/2" BSP	115	16	34	168	32	201	64	56	119	---	41	16
	8201-232-300	8202-232-300	1"	---	G 1/2" BSP	115	16	34	168	32	201	64	56	119	45	---	16
DN 40 1-1/2"	8201-240-31R	8202-240-31R	1-1/4"	G 1-1/2" BSP-RH	G 3/4" BSP	125	16	37	184	38	224	67	67	125	---	46	16
	8201-240-31L	8202-240-31L	1-1/4"	G 1-1/2" BSP-LH	G 3/4" BSP	125	16	37	184	38	224	67	67	125	---	46	16
	8201-240-300	8202-240-300	1-1/4"	---	G 3/4" BSP	125	16	37	184	38	224	67	67	125	50	---	16
DN 50 2"	8201-250-31R	8202-250-31R	1-1/2"	G 2" BSP-RH	G 1" BSP	145	18	44	226	50	273	84	81	147	---	60	18
	8201-250-31L	8202-250-31L	1-1/2"	G 2" BSP-LH	G 1" BSP	145	18	44	226	50	273	84	81	147	---	60	18
	8201-250-300	8202-250-300	1-1/2"	---	G 1" BSP	145	18	44	226	50	273	84	81	147	66	---	18
DN 65 2-1/2"	8201-265-31R	8202-265-31R	2"	G 2-1/2" BSP-RH	G 1-1/2" BSP	183	20	50	266	66	326	95	90	167	---	75	20
	8201-265-31L	8202-265-31L	2"	G 2-1/2" BSP-LH	G 1-1/2" BSP	183	20	50	266	66	326	95	90	167	---	75	20
	8201-265-300	8202-265-300	2"	---	G 1-1/2" BSP	183	20	50	266	66	326	95	90	167	85	---	20

** Rotor Connections: R – RH Thread, L – LH Thread, 0 – Flange Connection, Other threads connections are available upon request.

Subject to technical & dimensional changes without prior notice.