

# 8100 Series Mono-flow Rotary Unions for Steam & Hot Oil Applications



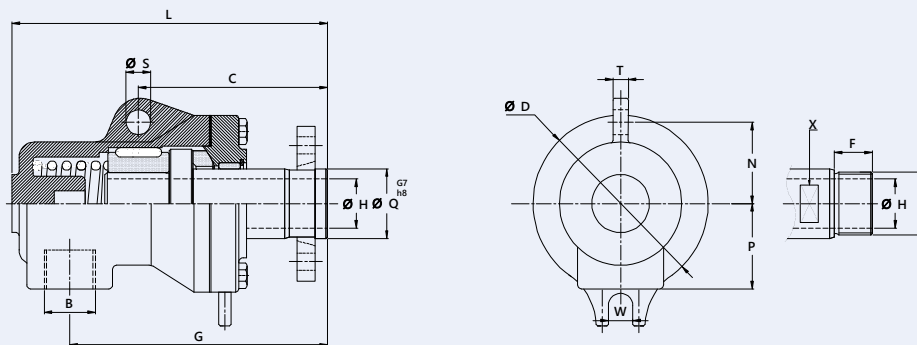
## Special Design Features

- Self-supported rotary union
- Heavy duty ductile iron housing up to 2½" size
- Heat treated carbon steel rotor
- Rotation of housing is prevented by fork on housing cover
- Highly wear resistant imported Carbon Graphite bush bearings
- Bush bearings are especially suitable for thermal oil in conditions of high pressure, temperature at moderate speed
- Mono flow design
- Available in both US and metric standards
- Easy installation & repairable
- Custom models are available

## Technical Data

- Max. Water Pressure 0.8 to 30 bar
- Max. Saturated Steam Pressure 0.8 to 30 bar
- Max. Hot Oil Pressure 0.8 to 10 bar
- Max. Temperature - 10°C to 320°C
- Max. Rotor Speed for 450 rpm
- Max. Flow of Media 24 L/min

## Mono-flow Design



Size	Model No.	'B' Port Size	'R' Rotor Thread	Ø D	S	F	G	Ø H	L	N	P	C	Ø Q G7 / h8	X	W
DN 25 1"	8100-125-31R	1"	G 1" BSP-RH	98	14	29	143	25	173	55	50	105	---	30	14
	8100-125-31L	1"	G 1" BSP-LH	98	14	29	143	25	173	55	50	105	---	30	14
	8100-125-300	1"	---	98	14	29	143	25	173	55	50	105	35	---	14
DN 32 1-1/4"	8100-132-31R	1-1/4"	G 3/8" BSP-RH	115	16	34	168	32	201	64	56	119	---	41	16
	8100-132-31L	1-1/4"	G 3/8" BSP-LH	115	16	34	168	32	201	64	56	119	---	41	16
	8100-132-300	1-1/4"	3/8" NPT-RH	115	16	34	168	32	201	64	56	119	45	---	16
DN 40 1-1/2"	8100-140-31R	1-1/2"	G 1-1/2" BSP-RH	125	16	37	184	38	224	67	67	125	---	46	16
	8100-140-31L	1-1/2"	G 1-1/2" BSP-LH	125	16	37	184	38	224	67	67	125	---	46	16
	8100-140-300	1-1/2"	---	125	16	37	184	38	224	67	67	125	50	---	16
DN 50 2"	8100-150-31R	2"	G 2" BSP-RH	145	18	44	226	50	273	84	81	147	---	60	18
	8100-150-31L	2"	G 2" BSP-LH	145	18	44	226	50	273	84	81	147	---	60	18
	8100-150-300	2"	---	145	18	44	226	50	273	84	81	147	66	---	18
DN 65 2-1/2"	8100-165-31R	2-1/2"	G 2-1/2" BSP-RH	183	20	50	266	66	326	95	90	167	---	75	20
	8100-165-31L	2-1/2"	G 2-1/2" BSP-LH	183	20	50	266	66	326	95	90	167	---	75	20
	8100-165-300	2-1/2"	---	183	20	50	266	66	326	95	90	167	85	---	20

\*\* Rotor Connections: R – RH Thread, L – LH Thread, 0 – Flange Connection, Other threads connections are available upon request  
Subject to technical & dimensional changes without prior notice.