

# 5500 Series Multi-Passage, Multi-Purpose, Multi-Media Rotary Unions

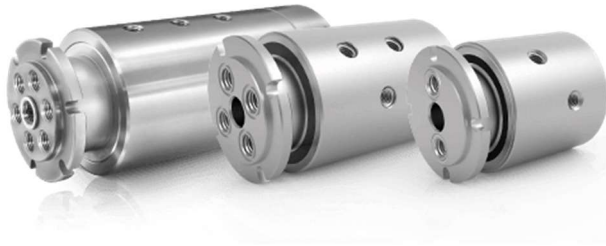


Multi-passage rotary unions are used for more than one operating media are used simultaneously. It is a self-supported rotary union. The multi-passage rotary union provides multiple, independent passages, each with a different rotating inlet ports, but lays same axis.

The multiple independent passages permit the flow of the same or different kind of operating media from rotating equipment. A multi-passage rotary union are including various media likes hydraulic fluids, air, coolant etc. The sealing technology selected is dependent on the media and operating conditions, such as temperature, pressure, speed, and passage size. The very special designed seals and the hardened steel rotor permits to operate at high fluid pressure and low rotation speed with low friction and wear.

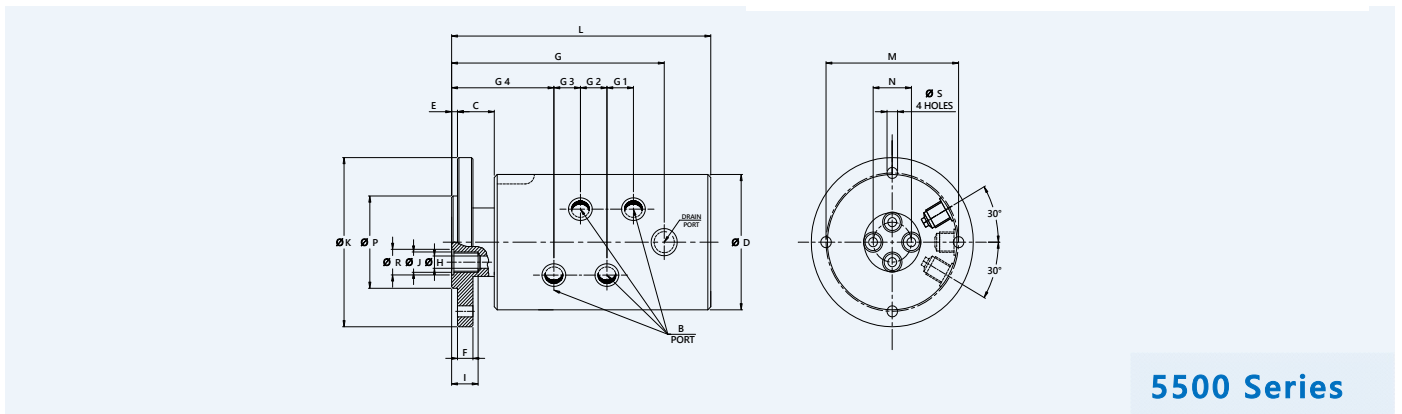
## Special Design Features

- Multi Passage design for multi-media application
- Self-supported rotary union
- Brass housing for water service
- Aluminium housing for air service
- Carbon steel housing for hydraulic oil service
- Corrosion resist stainless steel flanged rotor
- Widely spaced highly precise and lubricated heavy duty ball bearings for long life and stable rotation
- Specially designed mechanical seals to sustain high pressure changes with minimum friction and wear for prolong service life
- Dynamic carbon Teflon sealing design
- Available in both US and metric standards
- Easy installation
- Custom connections types are available



### Technical Data

- Max. Air Pressure 10 bar ( 145 psi )
- Max. Vacuum Pressure 2" Hg ( 6.7 kPa )
- Max. Hydraulic Pressure for High Speed Operation..... 60 bar ( 860 psi )
- Low Speed Operation..... 245 bar ( 3500 psi )
- Max. Temperature 80°C ( 175° F )
- Max. Rotor Speed 250 rpm



## 5500 Series

Size	Model No.	"B" Port Size	C	Ø D	E	F	G	G1	G2	G3	G4	Ø H	I	Ø J	Ø K	L	M	N	Ø P Pilot Dia.	Ø R	Ø S
4 X DN 10	5500-410-01	4X3/8" BSP	24.5	88.7	4	10.7	142	18	26	18	72	12.05 12.00	12	9	110	175.8	90	24.6	60.00 59.98	16.7	7.5
	5500-410-02	4X3/8" NPT	24.5	88.7	4	10.7	142	18	26	18	72	12.05 12.00	12	9	110	175.8	90	24.6	60.00 59.98	16.7	7.5
4 X DN 15	5500-415-01	4X1/2" BSP	24.5	107.5	4	13.7	169	23	32	23	81	15.05 15.00	15	13	130	202.5	110	29	75.00 74.98	19.7	9
	5500-415-02	4X1/2" NPT	24.5	107.5	4	13.7	169	23	32	23	81	15.05 15.00	15	13	130	202.5	110	29	75.00 74.98	19.7	9

Subject to technical & dimensional changes without prior notice.  
Please do not operate at max. pressure combined with max. speed.