



Special Design Features

- Self-supported rotary union
- Mono flow design
- Stainless steel housing to resist corrosion from media
- Stainless steel back cover and threaded rotor
- All components are made of steel and corrosion resist
- Highly precise and lubricated dual row ball bearings for long life and stable rotation at very high speed
- Specially designed mechanical seals to sustain high pressure with high speed changes with minimum friction and wear for prolong service life
- Available in both US and metric thread standards
- Easy installation

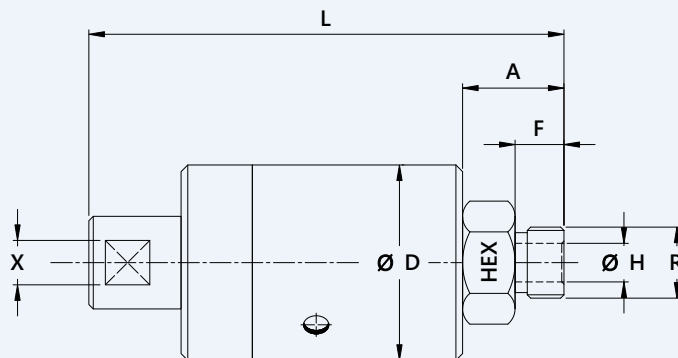
Technical Data

- Max. Hydraulic Oil Pressure 395 bar (5,700 psi)
- Max. Water Pressure 395 bar (5,700 psi)
- Max. Temperature 90°C (195° F)
- Max. Rotor Speed 1,500 rpm

Seal Face Combinations for High Performance

- Silicon Carbide to Silicon carbide
- Tungsten Carbide to Tungsten Carbide

DN 8 -25 Monoflow High Pressure and Speed Rotary Unions



Size	Model No.	'B' Port Size	'R' Rotor Thread	A	F	L	Ø D	Ø H	HEX	X
DN 8	2300-108-111	1/4"	1/4" BSP - RH	26	15	118	50	7	27	10
	2300-108-112		1/4" BSP - LH	26	15	118	50	7	27	10
DN 10	2300-110-111	3/8"	3/8" BSP - RH	26	15	118	50	10	27	10
	2300-110-112		3/8" BSP - LH	26	15	118	50	10	27	10
DN15	2300-115-111	1/2"	1/2" BSP- RH	30	20	122	50	12	30	10
	2300-115-112		1/2" BSP- LH	30	20	122	50	12	30	10
DN 20	2300-120-111	3/4"	3/4" BSP - RH	44	24	161	96	18	48	10
	2300-120-112		3/4" BSP - LH	44	24	161	96	18	48	10
DN 25	2300-125-111	1"	1" BSP - RH	44	24	161	96	24	48	10
	2300-125-112		1" BSP - LH	44	24	161	96	24	48	10

Subject to technical & dimensional changes without prior notice.

Please do not operate at max. pressure combined with max. speed.

Customized models are available on request.