

2100 Series Rotary Unions

for Air, Vacuum & Hydraulic Service

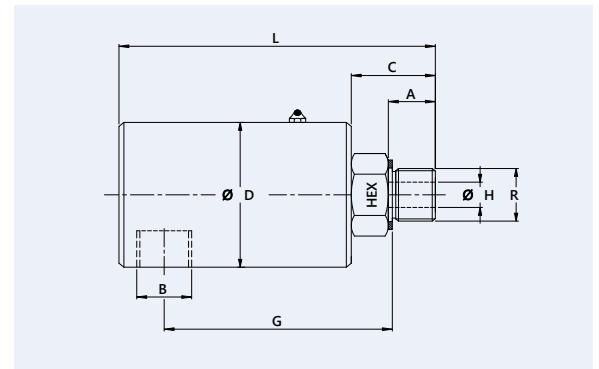


Special Design Features

- Self-supported rotary union
- Aluminium housing
- Stainless steel threaded rotor
- Highly precise and lubricated bearings for long life
- Specially designed mechanical seals to sustain high pressure changes with minimum friction and wear for prolong service life
- Designed for both axial and radial application
- Available in both US and metric thread standards
- Easy installation

Technical Data

- Max. Air Pressure 10 bar (145 psi)
- Max. Vacuum Pressure 2" Hg (6.7 kPa)
- Max. Hydraulic Pressure for :-
- Size- 1/8", 1/4", 3/8" 70 bar (1,000 PSI)
- Size- 1/2" 50 bar (750 PSI)
- Size- 1/2" 70 bar (1,000 PSI)
- Max. Temperature 120°C (250° F)
- Max. Rotor Speed (NPT Threads) 3,500 rpm
- Max. Rotor Speed (Parallel Threads) 1,500 rpm

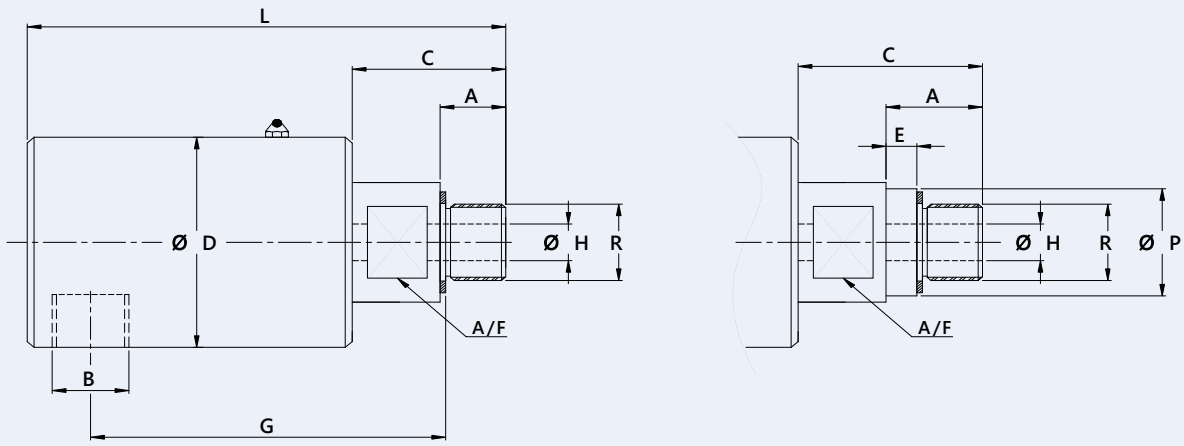


Size	Model No.	'B' Port Size	'R' Rotor Thread	A	C	Ø D	G	Ø H	L	HEX
DN 6	2100-106-011R	1/8"	1/4" BSP - RH	13	22	28.5	52	3.2	71.5	16
	2100-106-012L		1/8" NPT - LH	11	22	28.5	52	3.2	71.5	16
	2100-106-014R		3/8"-24 UNF - RH	13	22	28.5	52	3.2	71.5	16
	2100-106-014L		3/8"-24 UNF - LH	13	22	28.5	52	3.2	71.5	16
	2100-106-013R		M 10 X 1 - RH	11	22	28.5	54	3.2	71.5	16
DN 8	2100-108-011R	1/4"	1/4" BSP - RH	13	29	41.5	60	6.4	81	22.2
	2100-108-011L		1/4" BSP - LH	13	29	41.5	60	6.4	81	22.2
	2100-108-012R		1/4" NPT - RH	16	28.6	41.5	62.5	6.4	81	22.2
	2100-108-012L		1/4" NPT - LH	16	28.6	41.5	62.5	6.4	81	22.2
	2100-108-014R		5/8" - 18 UNF - RH	16	28.6	41.5	57	6.4	81	22.2
	2100-108-014L		5/8" - 18 UNF - LH	16	28.6	41.5	57	6.4	81	22.2
DN 10	2100-110-011R	3/8"	3/8" BSP - RH	16.5	27	43.5	71.5	8.7	100	24
	2100-110-012R		1/4" NPT - RH	16	27	43.5	79.5	9.5	100	24
	2100-110-112R		3/8" NPT - RH	16	27	43.5	79.5	9.5	100	24
	2100-110-014R		5/8" - 18 UNF - RH	16	27	43.5	72.2	9.5	100	24
	2100-110-014L		5/8" - 18 UNF - LH	16	27	43.5	72.2	9.5	100	24
	2100-110-013R		M 16 X 2 - RH	16.5	27	43.5	72.2	8.7	100	24
DN 15	2100-115-011R	1/2"	1/2" BSP - RH	19	33.3	57	77.5	12.7	113	28.5
	2100-115-011L		1/2" BSP - LH	19	33.3	57	77.5	12.7	113	28.5
	2100-115-111R		3/4" BSP - RH	19	32.5	57	77	15.8	112	35
	2100-115-111L		3/4" BSP - LH	19	32.5	57	77	15.8	112	35
	2100-115-012R		1/2" NPT - RH	22.2	36.5	57	89	12.7	116	28.5
	2100-115-012L		1/2" NPT - LH	22.2	36.5	57	89	12.7	116	28.5
	2100-115-112R		3/4" NPT - RH	22.2	36.5	57	88	15.8	116	28.5
	2100-115-112L		3/4" NPT - LH	22.2	36.5	57	88	15.8	116	28.5
	2100-115-014R		3/4" - 16 UNF - RH	19	33.3	57	77.5	12.7	112.5	28.5
	2100-115-014L		3/4" - 16 UNF - LH	19	33.3	57	77.5	12.7	112.5	28.5
	2100-115-013R		M 35 X 1.5 - RH	15	38	73	96	17.5	125.5	41
	2100-115-013L		M 35 X 1.5 - RH	15	38	73	96	17.5	125.5	41
	2100-115-015R		1" - 14 UNS - RH	19	32.5	51	77	15.8	112	35
	2100-115-015L		1" - 14 UNS - LH	19	32.5	51	77	15.8	112	35

Subject to technical & dimensional changes without prior notice.

Please do not operate at max. pressure combined with max. speed.

Customized models are available on request.



Size	Model No.	'B' Port Size	'R' Rotor Thread	A	C	Ø D	E	G	Ø H	L	Ø P Pilot Dia.	A/F
DN 20	2100-120-011R	3/4"	G 3/4" BSP-RH	19	34	72.5	---	94	17.5	128	---	32
	2100-120-011L		G 3/4" BSP-LH	19	34	72.5	---	94	17.5	128	---	32
	2100-120-012R		3/4" NPT-RH	22	36.5	72.5	---	103	19.5	130	---	32
	2100-120-012L		3/4" NPT-LH	22	36.5	72.5	---	103	19.5	130	---	32
	2100-010-013R-P		M 22 X 1.5-RH-PLT	14	28	72.5	3	87.5	14.3	87.5	26.992/26.979	32
	2100-010-013L-P		M 22 X 1.5-LH-PLT	14	28	72.5	3	87.5	14.3	87.5	26.992/26.979	32
	2100-010-113R-P		M 27 X 1.5-RH-PLT	15	35	72.5	6	91	17.5	129	27.993/27.980	36
	2100-010-113L-P		M 27 X 1.5-LH-PLT	15	35	72.5	6	91	17.5	129	27.993/27.980	36
	2100-120-113R		M 35 X 1.5-RH	15	38	72.5	---	101	17.5	131	---	41
	2100-120-113L		M 35 X 1.5-LH	15	38	72.5	---	101	17.5	131	---	41
	2100-120-015R		1" -14 UNS-RH	19	33	72.5	---	93.6	16.7	127	---	32
	2100-120-015L		1" -14 UNS-LH	19	33	72.5	---	93.6	16.7	127	---	32
	2100-120-115R-P		1" -14 UNS-RH-PLT	19	54	72.5	12.7	101.5	16	147.5	31.699/31.694	41
	2100-120-115L-P		1" -14 UNS-LH-PLT	19	54	72.5	12.7	101.5	16	147.5	31.699/31.694	41
DN 25	2100-125-011R	1"	G 1" BSP-RH	21	42	82.6	---	108	22.2	150	---	38
	2100-125-011L		G 1" BSP-LH	21	42	82.6	---	108	22.2	150	---	38
	2100-125-012R		1" NPT-RH	28.5	49	82.6	---	122	25.4	157	---	38
	2100-125-012L		1" NPT-LH	28.5	49	82.6	---	122	25.4	157	---	38
	2100-125-013R		M 35 X 1.5-RH	15	35	83	---	108	25	144	---	36
	2100-125-013L		M 35 X 1.5-LH	15	35	83	---	108	25	144	---	36
	2100-125-113R-P		M 35 X 1.5-RH-PLT	29	59	83	12	103	25	167	39.991/39.975	36
	2100-125-113L-P		M 35 X 1.5-LH-PLT	29	59	83	12	103	25	167	39.991/39.975	36
	2100-125-014R		1-1/2" -12 UNF-RH	28.5	49	82.6	---	108	25.4	157	---	38
	2100-125-014L		1-1/2" -12 UNF-LH	28.5	49	82.6	---	108	25.4	157	---	38
	2100-125-114-P		1-1/2" -12 UNF-RH-PLT	25.5	58.7	82.6	12.7	106.5	25.4	166.5	39.649/39.636	38
	2100-125-114-P		1-1/2" -12 UNF-LH-PLT	25.5	58.7	82.6	12.7	106.5	25.4	166.5	39.649/39.636	38
DN 40	2100-140-011R	1-1/2"	G 1-1/2" BSP-RH	29	72	108	---	143	35	205	---	54
	2100-140-011L		G 1-1/2" BSP-LH	29	72	108	---	143	35	205	---	54
	2100-140-012R		1-1/2" NPT-RH	30	62	108	---	147.5	38	195	---	54
	2100-140-012L		1-1/2" NPT-LH	30	62	108	---	147.5	38	195	---	54
	2100-140-013R		M 50 X 1.5-RH	23	66	108	---	147	38	200	---	54
	2100-140-013L		M 50 X 1.5-LH	23	66	108	---	147	38	200	---	54
	2100-140-016R		1-3/4" -12 UN-RH	22	81	108	---	159	32	214	---	54
	2100-140-016L		1-3/4" -12 UN-LH	29	72	108	---	143	35	205	---	54
	2100-140-116R		2" -12 UN-RH	28.5	71.5	108	---	143	38	205	---	54
	2100-140-116L		2" -12 UN-LH	28.5	71.5	108	---	143	38	205	---	54

Subject to technical & dimensional changes without prior notice
Please do not operate at max. pressure combined with max. speed
Customized models are available on request.